

Standalone bushfire plan 2021-2022

Two Rocks Primary School



Purpose

The *Standalone bushfire plan* document is a detailed plan of how your school is to prepare and respond to a catastrophic fire danger rating alert or to a bushfire event.

You must complete this template to have a plan in place to respond to a bushfire emergency until, during and after the attendance of Emergency Services. This plan is to be read in conjunction with the Department of Education *Principal's guide to bushfire*.

All staff, students, contractors and visitors on the school or facility site are to follow this completed plan in the event of a bushfire emergency. All other emergencies are to be managed in accordance with the school's [incident management plan](#).

You are required to complete and lodge your plan online by the 31 August, before the bushfire season begins.

Contents

1	School details	3
2	Emergency response contact list.....	4
2.1	Important bushfire emergency information contacts sources	4
3	Incident management team.....	5
4	Bushfire response telephone tree.....	6
5	Emergency equipment	7
6	Bushfire preparation checklist.....	8
7	Bushfire action plan maps	11
7.1	Onsite 'safer building location(s)'	11
7.2	Offsite evacuation locations	12
8	Bushfire mitigation management register	13
9	Advice from Department of Fire and Emergency Services and other agencies.....	14
Appendix A – Bushfire warnings stages.....		15
Appendix B – Procedures in event of a sudden bushfire.....		17
	Relocate to onsite 'safer building location(s)'	17
	Offsite evacuation procedures	19
Appendix C - Pre-emptive (planned) closure procedures		21
	Flow chart – Principal's response to 'catastrophic' fire danger rating	22
Appendix D – After hours or school holiday procedures.....		23
Appendix E – Communication templates.....		24
	Emergency text message alert templates	24
	School newsletter sample text	25
	Sample text for a notice of temporary school closure	26

1 School details

To complete this plan:

- use the *Principal's guide to bushfire (Principal's guide)* to help you
- on the front cover of the document, remove the word 'template' and replace it with your school's name
- enter information into the **grey** sections of this document, following the prompts in the square brackets where featured. You can add extra rows to tables where necessary.

When your plan is complete, access [Prepare for bushfire season at your school](#) on Ikon to lodge it as one document (include appendices).

School name (include name of co-located school or facilities if applicable)	Two Rocks Primary School
School address	51 Resolute Drive Two Rocks WA 6037
Number of students	460
Number of staff	56
Number of students requiring extra support if evacuating	54 Kindergarten students
Number of school sides bordered by bush	Three
Names of major roads bordering school	Resolute Drive Dame Pattie
School's site-specific alert, for example: <ul style="list-style-type: none"> • siren/pause x 3 • continuous handbell • continuous siren or short whistle blasts 	Siren/pause x 3

Plan prepared by (principal's name)	Elizabeth Wildish
Date prepared	23 rd August 2021

2 Emergency response contact list

Enter the contact details into the table below.

Organisation	Details	Phone number / Website
Local police (eg name of nearest police station)	Yanchep Police Station	9562 9300
Local hospital (eg name of nearest hospital or medical emergency facility)	Joondalup Hospital	9400 9400
DFES regional contact		
Local fire brigade (eg name of nearest fire station)		
Local bushfire brigade (eg name of nearest station)	Two Rocks Volunteer Fire Brigade Captain Derek Young	000 0427 026 000
Bus contractors (ready for pre-emptive closure or offsite evacuation)	Gabbadah- Fabio Spedicato Woodridge – Daniel Moyes Seatrees/Carabooda -Brett Bailey	0456 789 077 0449 799 363 0417 930 548
Electricity provider - in the case of a power outage (eg Horizon Power or Western Power)	Western Power	13 13 51
State emergency service (if known)	DFES	13 25 00
Poisons information (where relevant)	Sir Charles Gardner Hospital	13 11 26
Director of Education – contact name	Joanne Harris	9285 3600

Dial 000 in an EMERGENCY

2.1 Other important emergency sources

- 1) [Emergency WA website](https://www.emergency.wa.gov.au/) - <https://www.emergency.wa.gov.au/>
- 2) **Department of Fire and Emergency Services**
Information line – 13 33 37
Twitter - https://twitter.com/dfes_wa
- 3) **Local radio**
 - [ABC Emergency WA](#)
 - ABC local radio
 - 6PR

3 School Response Team

Enter the names and mobile numbers of the staff responsible for carrying out emergency procedures during a bushfire event. The principal is responsible for coordinating the incident response to onsite or offsite locations (refer to Appendix B & C procedures).

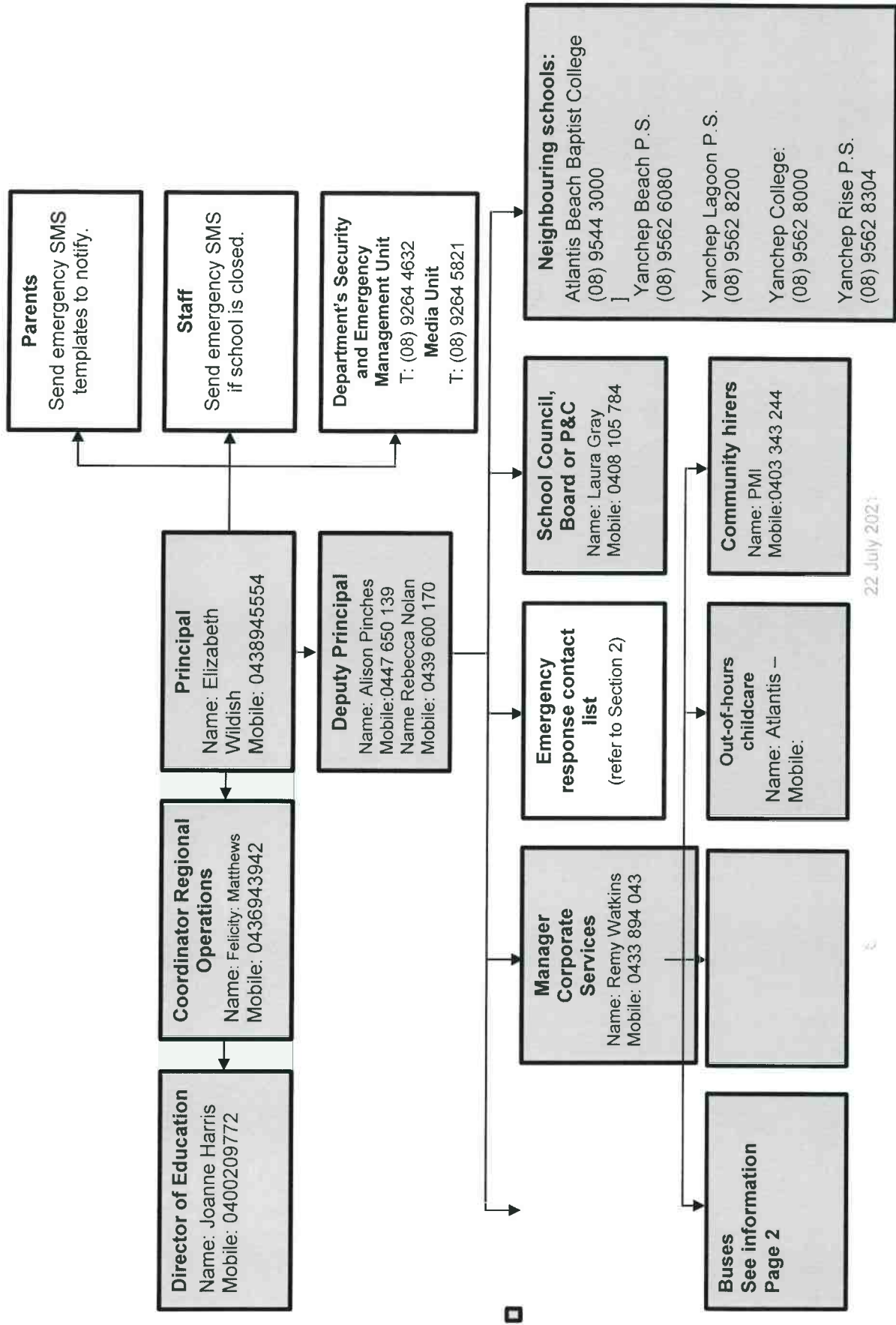
Examples of suggested duties include:

- fire warden duties
- checking all rooms
- keeping a copy of school registers for roll call
- monitoring the bushfires warnings stages (as per Appendix A)
- send out text alerts to parents (refer Appendix E)

Position	Staff Name	Duties	Mobile number
Principal	Elizabeth Wildish	<ul style="list-style-type: none"> • Site Manager/Admin Sweeper 	0438 945 554
Deputy Principal	Alison Pinches	Block Sweeper/Reserve Site Manager	0447 650 139
	Rebecca Nolan	Block Sweeper /Reserve Site Manager	0439 600 170
Manager Corporate Services	Remy Watkins	Admin/ Roll Call/Reserve Admin Sweeper	0433 894 043
Teachers	Harriet Canning Jacinta Matthews	Block Sweeper Block Sweeper	0401 446 535
Accredited first aid officers	Corinna King	Former Nurse	
Other (if applicable)			

4 Bushfire response telephone tree

Complete the information boxes with the contact details for the relevant stakeholders.



5 Emergency equipment

Identify the location and the type of emergency equipment at your site.

Equipment	Details (include location/s, date checked and any other comments)
Evacuation kit	Admin Block
First aid kit(s)	Admin
Emergency warning or alert system, eg: <ul style="list-style-type: none"> • mobile telephones (charged) • hand-operated fire alarm (portable siren) • portable radios • spare batteries 	Admin Block
Emergency communications equipment	Principal
Registers for: <ul style="list-style-type: none"> • students • staff • visitors 	Students Register – Principal/ Class Teachers Staff /Visitors -- MCS

6 Bushfire preparation checklist

Principals must:

- complete this bushfire preparation checklist annually
- provide evidence in the form of notes to show that management activities have been actioned
- inform all staff members of their responsibilities.

Management activities	<input checked="" type="checkbox"/> or NA	Evidence
The annual review of the <i>Standalone bushfire plan</i> has been completed before the start of bushfire season.		28 January 2021
<p>Consulted and received advice in preparing your <i>Standalone bushfire plan</i> from any of the below (as relevant):</p> <ul style="list-style-type: none"> • local Emergency Services • Department of Fire and Emergency Services • Department of Biodiversity, Conservation and Attractions – Parks and Wildlife Service • local volunteer fire brigade • WA Police Force • local emergency management committee (LEMC) or local government representative • community emergency services manager if there is one for the area. 		DFES Fire and Emergency Services
<p>Staff have been made aware of the <i>Standalone bushfire plan</i> through:</p> <ul style="list-style-type: none"> • staff meetings • staff bushfire induction session that includes: <ul style="list-style-type: none"> ○ an overview of the <i>Standalone bushfire plan</i> ○ how to turn off evaporative air conditioner units, the location of switches ○ how to close roof vents ○ the types of Bushfire Warnings issued by the Department of Fire and Emergency Services and the Emergency Alert telephone warning system ○ to direct bushfire media enquiries to the Department's media unit (08) 9264 5821. 		Staff Induction 29 January 2021
<p>Students and parents or carers have been made aware of the <i>Standalone bushfire plan</i> through:</p> <ul style="list-style-type: none"> • key bushfire safety messages incorporated into the curriculum • newsletters • school information booklet (include actions and procedures) • school website 	<input checked="" type="checkbox"/>	<p>Bush Fire plan is on the website</p> <p>state location of plan on school website</p> <p>parents informed in Newsletter</p>

<p>Communication plans are in place:</p> <ul style="list-style-type: none"> • 'emergency response contact list' completed (refer to section 2) • 'bushfire response telephone tree' completed (refer to section 4) • communication templates for sample emergency text message, newsletter content and school notice text are complete (refer to Appendix D) <p>Note: Contact lists for staff and parents must be current.</p>	<input checked="" type="checkbox"/>	<p>All contained in the Evacuation Kit located in Admin.</p>
<p>Emergency equipment available and checked (as listed in section 5):</p> <ul style="list-style-type: none"> • evacuation kit checked at least once per term • emergency warning or alert system works • emergency communications equipment available • first aid kit(s) available • registers for students, staff and visitors readily accessible for roll call 	<input checked="" type="checkbox"/>	<p>Emergency Equipment checked termly.</p>
<p>Evacuation drills practised to your onsite 'safer building location(s)':</p> <ul style="list-style-type: none"> • before the start of the bushfire season • at least once per term during the bushfire season. <p>Note: You must do at least three drills per year.</p>	<input checked="" type="checkbox"/> <input checked="" type="checkbox"/>	<p>Term 1 10 March 2021</p> <p>Term 2 9 June 2021</p> <p>Term 3 25 August 2021</p> <p>Term 4 17 November 2021</p>
<p>Onsite 'safer building location(s)' are identified. Do not use an open area such as a school oval or non-enclosed building.</p> <ul style="list-style-type: none"> • shown in your school site plan in <i>section 7.1</i> • listed in the <i>Incident Management Plan</i> • regularly checked for readiness • local emergency services are informed of location(s) <p>Note: For further information, refer to section 4.2 in <i>Principal's guide</i>.</p>	<input checked="" type="checkbox"/>	<p>Undercover Area identified as the safe Building with access for Fire Trucks</p>
<p>Two or more suitable offsite evacuation locations have been identified in case one of the offsite locations is under threat from the bushfire. In most cases the off-site evacuation location will be determined by the incident controller.</p> <p>Local government authority has provided written or email approval on the use of these offsite locations.</p> <p>Note: For further information, refer section 4.3 in the <i>Principal's guide</i>.</p>	<input checked="" type="checkbox"/>	<p>Shamrock Park Two Rocks</p>

<p>The asset protection zone, which is a minimum distance of 20 metres surrounding the school is checked and:</p> <ul style="list-style-type: none"> • clear of all rubbish, long dry grass, bark, flammable and combustible materials, including leaf litter and unused piles of mulch • maintained routinely throughout the year <p>Note: For further information, refer to section 4.3 in the <i>Principal's guide</i>.</p>	<input checked="" type="checkbox"/>	
<p>Check the fuel load management (the clearing of dry grass, leaves, twigs, dead vegetation and dead bark) within the hazard separation zone (extending 80 metres from the outer edge of the asset protection zone) has reduced and:</p> <ul style="list-style-type: none"> • the likelihood of crown fires developing close to buildings • spot fire ignition potential within the zone 	<input checked="" type="checkbox"/>	
<p>The use of machinery (such as angle grinders, mowers or machines with internal combustion engines) is restricted on severe fire danger days.</p> <p>The use of any machinery or power tools that can generate sparks on <i>total fire ban</i> days is not permitted.</p> <p>Note:</p> <ul style="list-style-type: none"> • Any 'hot works' including welding and grinding or the operation of plant, equipment or machinery in bushland areas, can potentially ignite vegetation and cause bushfires. • Refer to the <i>Principal's guide to bushfire – 'Terminology'</i> (section 13 of the guide) 	<input checked="" type="checkbox"/>	

7 Bushfire action plan maps

7.1 Onsite 'safer building location(s)' Do not use an open area such as a school oval or non-enclosed building.

Insert your school map and include:

- The onsite safer building location(s) and routes to access this building
- location of fire hydrants (insert 'hydrant' icon on map)
- electrical switchboards (insert text boxes containing 'switchboard' on map)
- phones and communication board (insert icon and text box on map)
- first aid kits (insert 'first aid' icon on map)
- evacuation kits (insert text box onto map to show 'evacuation kit' location).

A sample of an action plan map is available in *section 9.2 of the Principal's guide*.

<p style="text-align: center;">See attached</p>	<p>Emergency Dial 000 Primary action: Determine if the bushfire is a threat to the school. Monitor official sources listed in section 2.</p> <p>Secondary action: Refer to Appendix B for the procedures to Relocate to onsite 'safer building location(s)'. [list onsite 'safer building location(s)']</p>
	<p>Map last updated: [insert date]</p>

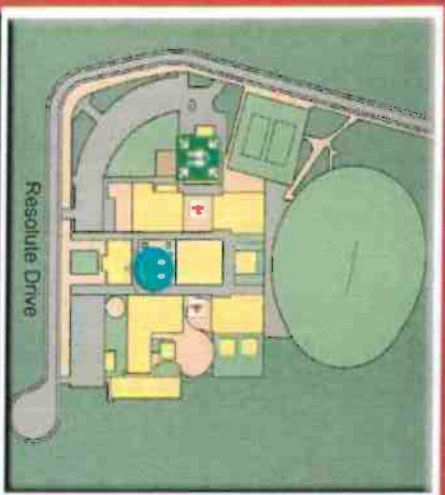




LEGEND

EVACUATION DIAGRAM

ASSEMBLY AREA



Two Rocks Primary School. 51 Resolute Dr, Two Rocks, 6037

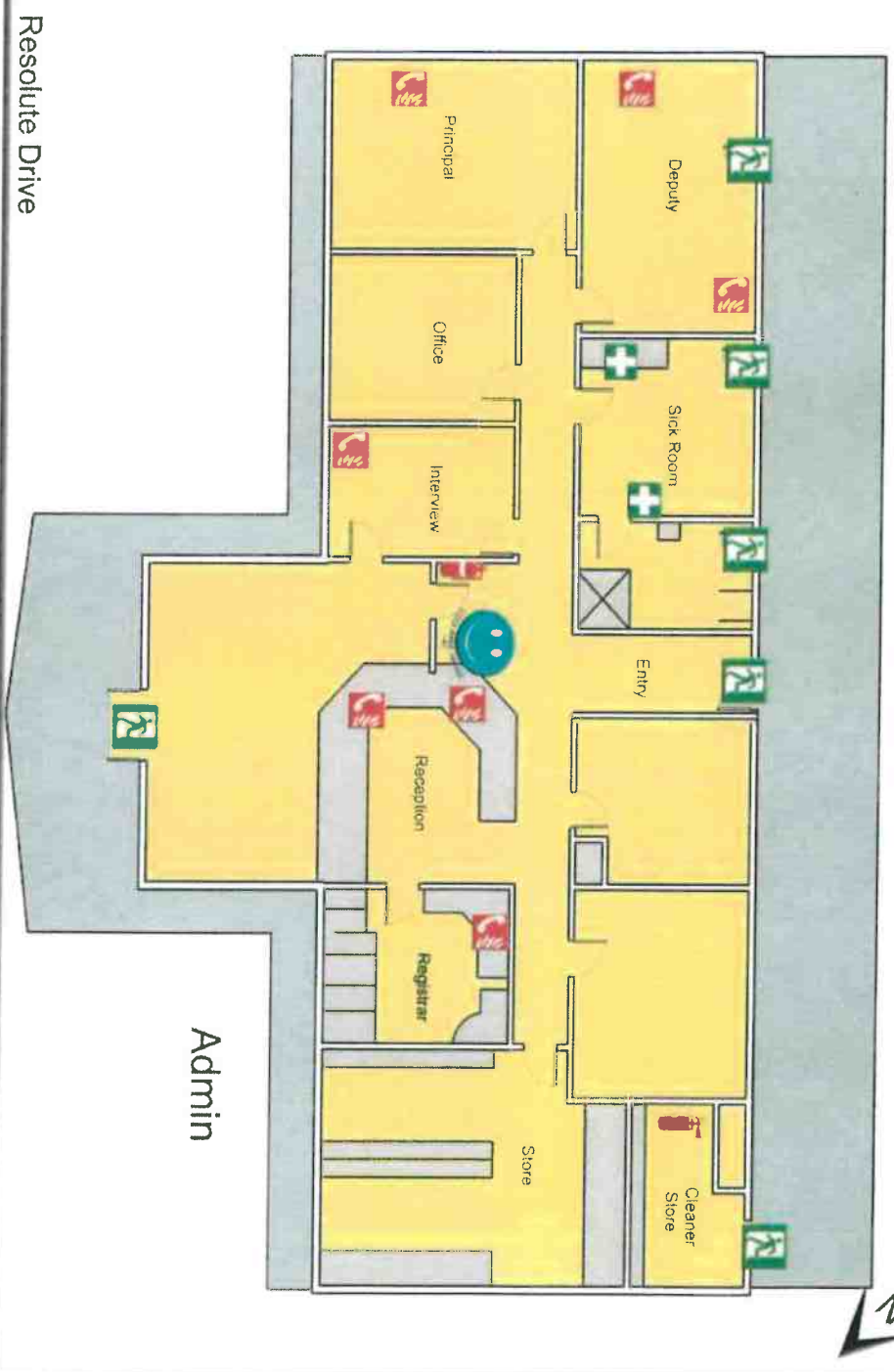
IN CASE OF FIRE

R RESCUE PEOPLE FROM
IMMEDIATE DANGER.

A ALERT OTHER OCCUPANTS.

C CONTAIN CLOSE WINDOWS
AND DOORS.

E EXTINGUISH IF TRAINED



LEGEND



ISSUE DATE: DRAFT DRAFT DRAFT
VERSION: DRAFT DRAFT DRAFT
VALIDATION DATE: DRAFT DRAFT DRAFT

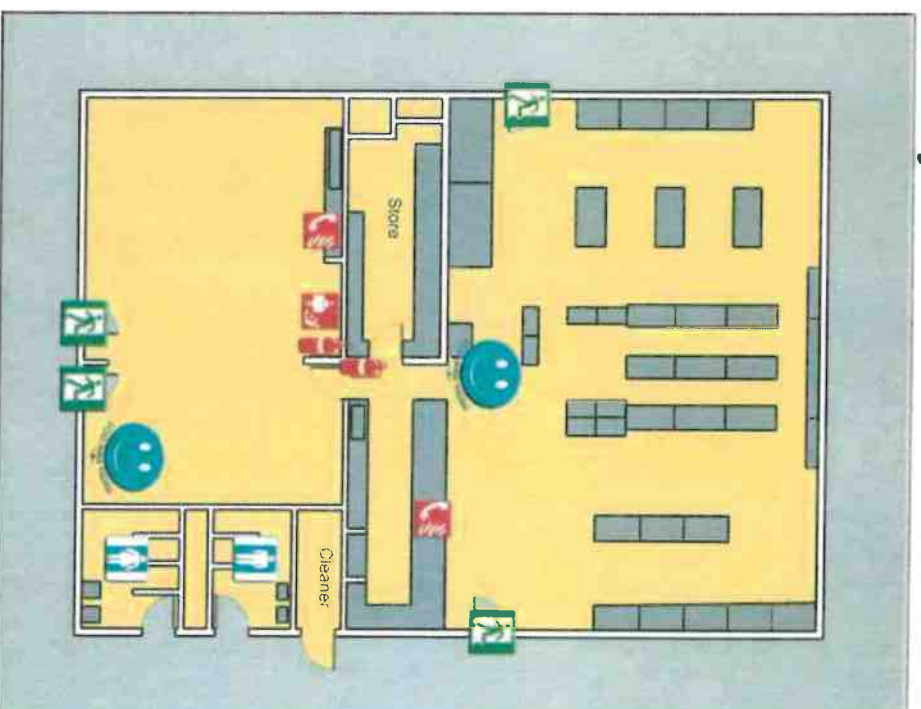
EVACUATION DIAGRAM

ASSEMBLY AREA



Two Rocks Primary School. 51 Resolute Dr, Two Rocks, 6037

Library



IN CASE OF FIRE

R RESCUE PEOPLE FROM
IMMEDIATE DANGER.

A ALERT OTHER OCCUPANTS.

C CONTAIN CLOSE WINDOWS
AND DOORS.

E EXTINGUISH IF TRAINED



ISSUE DATE: DRAFT DRAFT DRAFT
VERSION: VALIDATION DATE:

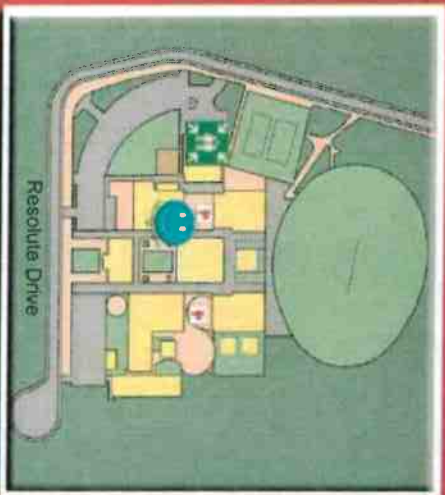
LEGEND

Resolute Drive



EVACUATION DIAGRAM

ASSEMBLY AREA



Two Rocks Primary School. 51 Resolute Dr, Two Rocks, 6037



IN CASE OF FIRE

R RESCUE PEOPLE FROM
IMMEDIATE DANGER.

A ALERT OTHER OCCUPANTS.

C CONTAIN CLOSE WINDOWS
AND DOORS.

E EXTINGUISH IF TRAINED



Delphin

LEGEND

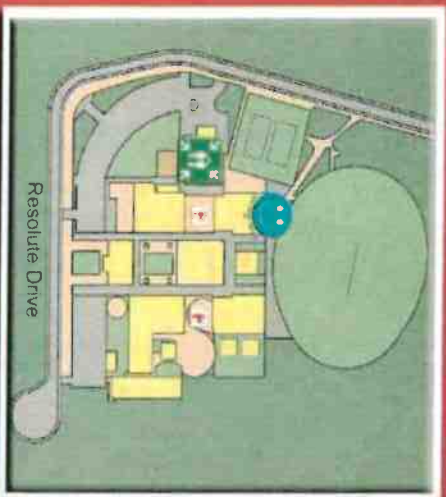
Resolute Drive



ISSUE DATE: DRAFT DRAFT DRAFT
VERSION: VALUATION DATE:

EVACUATION DIAGRAM

ASSEMBLY AREA



Two Rocks Primary School. 51 Resolute Dr, Two Rocks, 6037



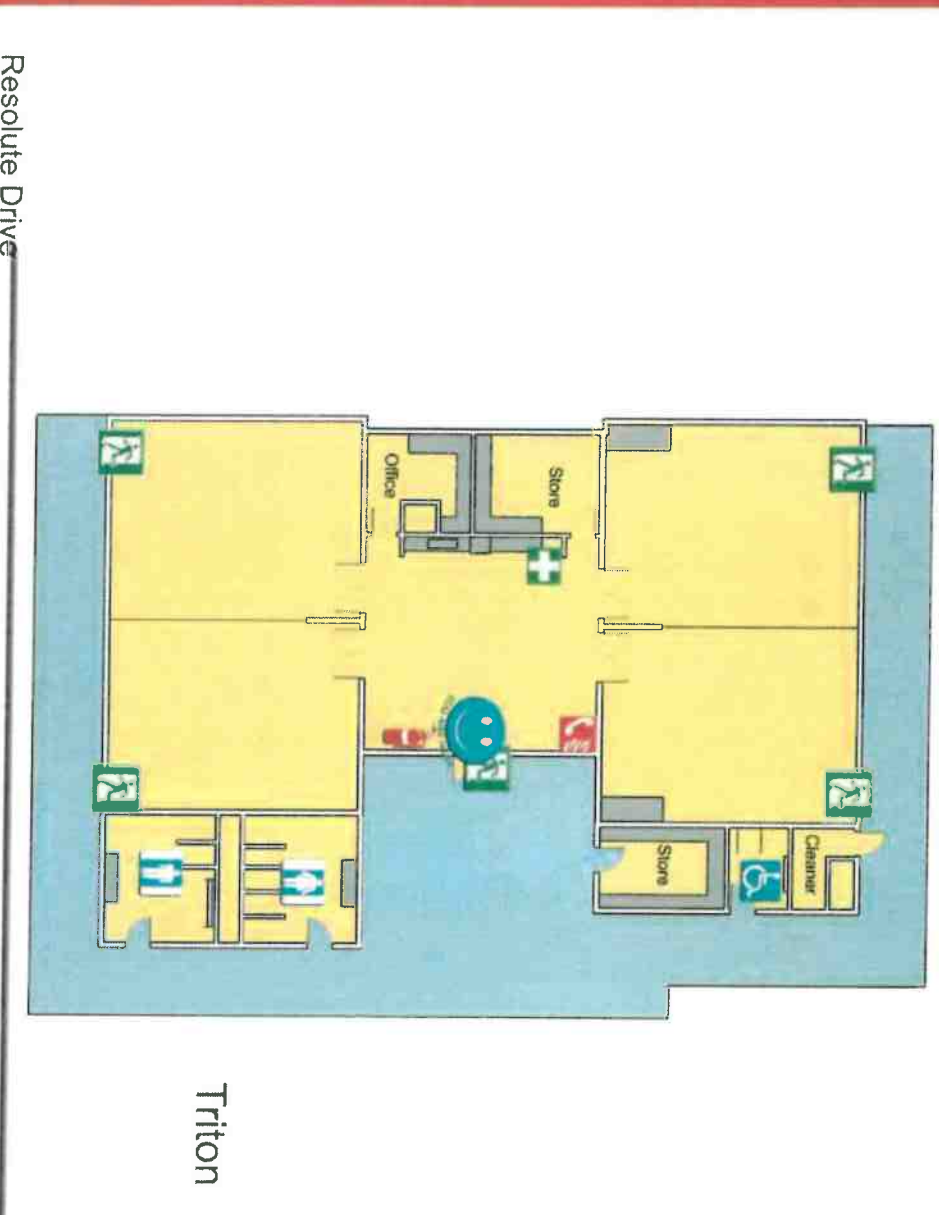
IN CASE OF FIRE

R RESCUE PEOPLE FROM
IMMEDIATE DANGER.

A ALERT OTHER OCCUPANTS.

C CONTAIN CLOSE WINDOWS
AND DOORS.

E EXTINGUISH IF TRAINED



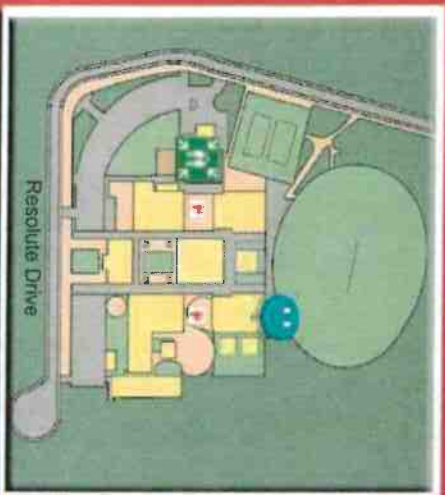
LEGEND



ISSUE DATE: DRAFT DRAFT DRAFT
VERSION: DRAFT DRAFT
VALIDATION DATE:

EVACUATION DIAGRAM

ASSEMBLY AREA

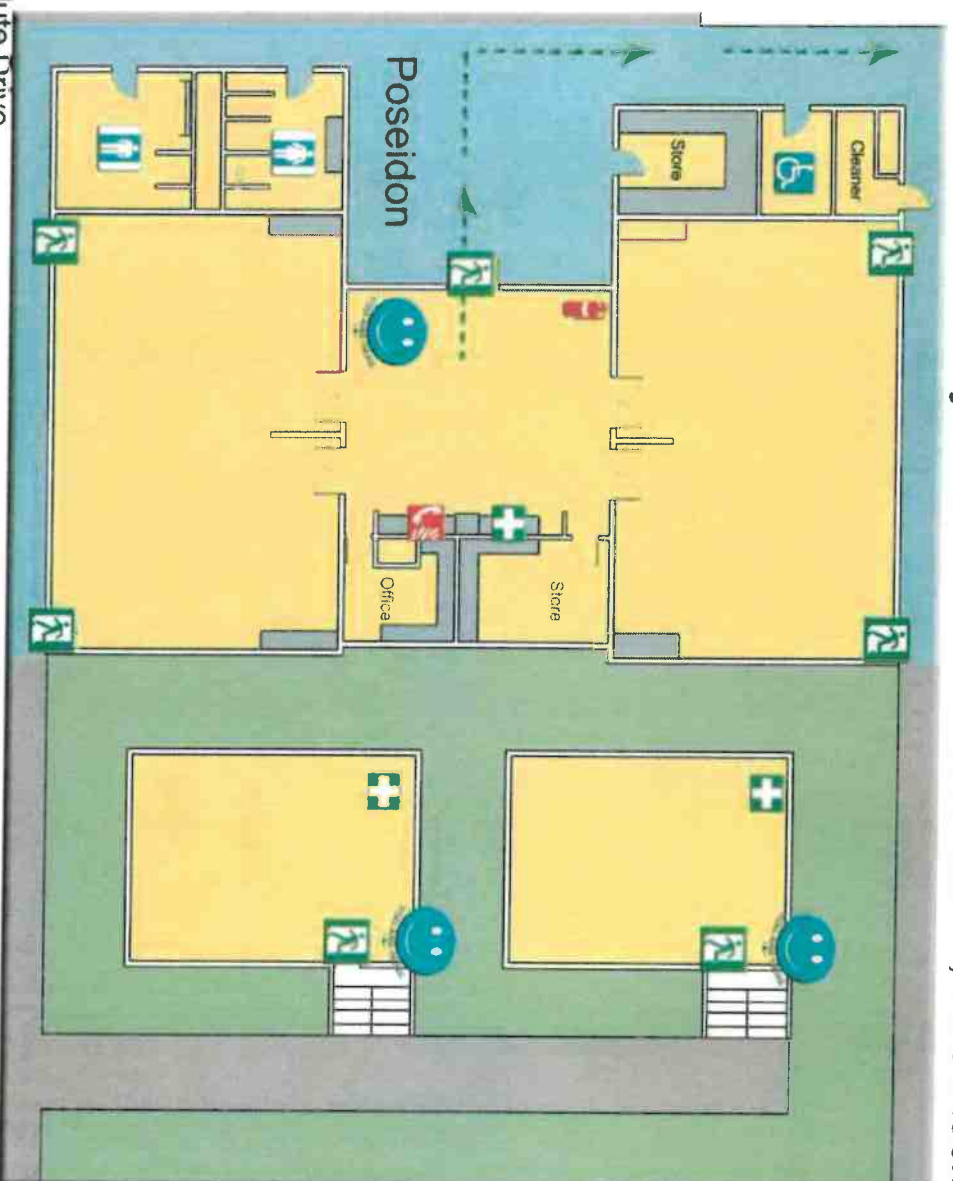


Two Rocks Primary School. 51 Resolute Dr, Two Rocks, 6037



IN CASE OF FIRE

- R** RESCUE PEOPLE FROM IMMEDIATE DANGER.
- A** ALERT OTHER OCCUPANTS.
- C** CONTAIN CLOSE WINDOWS AND DOORS.
- E** EXTINGUISH IF TRAINED



Resolute Drive

LEGEND



EVACUATION DIAGRAM

ASSEMBLY AREA

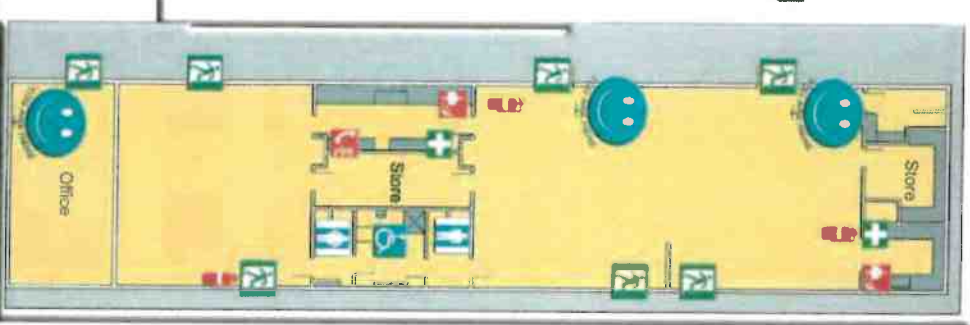
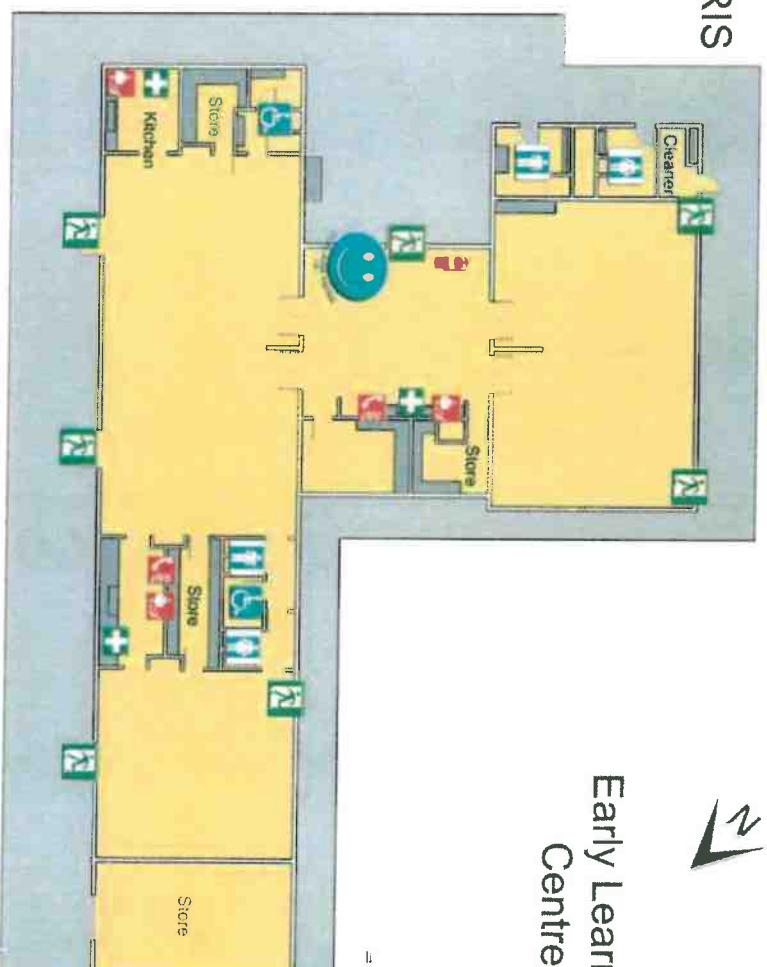


Two Rocks Primary School. 51 Resolute Dr, Two Rocks, 6037

IRIS



Early Learning
Centre



IN CASE OF FIRE

R RESCUE PEOPLE FROM
IMMEDIATE DANGER.

A ALERT OTHER OCCUPANTS.

C CONTAIN CLOSE WINDOWS
AND DOORS.

E EXTINGUISH IF TRAINED

Resolute Drive

LEGEND



ISSUE DATE: DRAFT DRAFT DRAFT
VERSION: VALIDATION DATE:

EVACUATION DIAGRAM

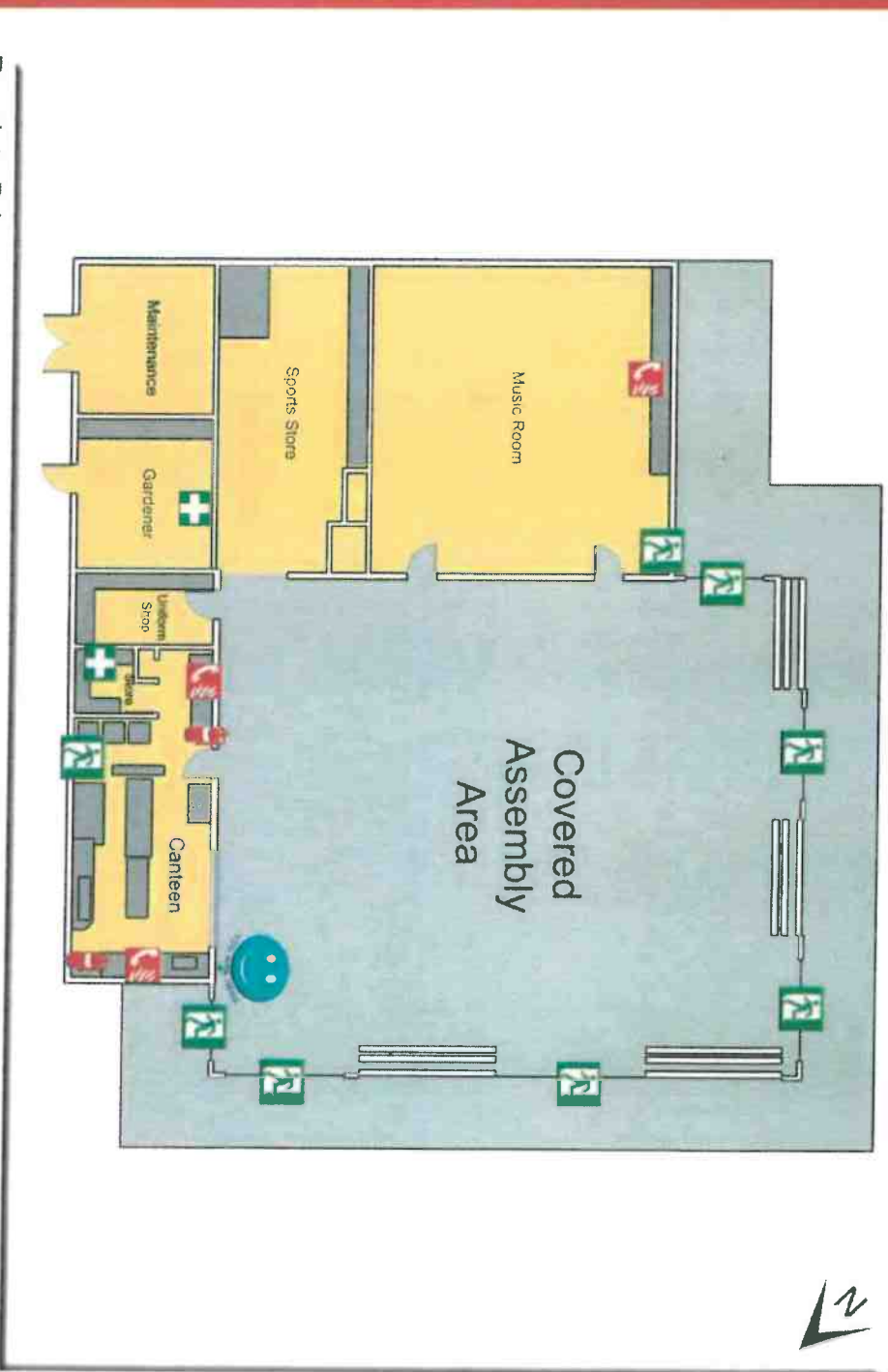
ASSEMBLY AREA



Two Rocks Primary School. 51 Resolute Dr, Two Rocks, 6037

IN CASE OF FIRE

- R** RESCUE PEOPLE FROM IMMEDIATE DANGER.
- A** ALERT OTHER OCCUPANTS.
- C** CONTAIN CLOSE WINDOWS AND DOORS.
- E** EXTINGUISH IF TRAINED.



LEGEND

Resolute Drive



ISSUE DATE: DRAFT DRAFT DRAFT
VERSION: DRAFT DRAFT DRAFT
VALIDATION DATE:



7.2 Offsite evacuation locations

Insert the school site map and include:

- assembly point(s) (insert 'assembly point' icon on map)
- identify two offsite evacuation locations
- include directional arrows to show routes to your offsite evacuation locations.

A sample of an action plan map is available in *section 9.2 of the Principal's guide*.

<p>See attached</p>	
<p>Emergency Dial 000</p> <p>Primary action: Determine if the bushfire is a threat to the school. Monitor official sources listed in section 2.</p> <p>Secondary action: Refer to Appendix B for the procedures to Relocate to offsite evacuation location</p>	<p>[List all offsite evacuation locations including addresses]</p>
<p>Map last updated: [insert date]</p>	





8 Bushfire mitigation management register

Attach your bushfire mitigation register for any treatment works or actions undertaken to reduce risk (refer section 3.2 of the *Principal's guide*)

Note:

If your school has not received a *bushfire risk assessment and treatment plan* and had the identified works undertaken, you are not required to complete this register.

Reference number	Bushfire mitigation actions		Target date for completion	Responsible	Source of funds	Notes	Completion date	
	Treatment strategy / works required	Date (dd/mm/yyyy)					Progress or issues associated with the work (including date of progress or issues)	Date (dd/mm/yyyy)
	See Attachments							

9 Advice from Department of Fire and Emergency Services and other agencies

Record in the table below any bushfire advice received by the school from:

- Department of Fire and Emergency Services, including the local DFES regional office
- local fire brigades and community emergency services manager
- local government
- local government local emergency management committee
- external experts.

Identify the date and source of the advice.

Date of advice	Agency name	Advice received	Name of officer (who provided advice)	Contact number or email address

Bushfire Risk Assessment and Treatment Plan

Two Rocks Primary School

Report Details			
Address:	51 Resolute Drive		
Suburb:	TWO ROCKS 6037		
Local Government Area	City of Wanneroo		
CM9 File Number:	D00148-1	Report Version:	1.0
Field Assessment Date:	5-Aug-20	Report Date:	9-Oct-20
DFES Assessor:	Bushfire Risk Management Liaison Officer		
Risk Rating	Extreme		
Supporting Notes: <ul style="list-style-type: none"> Two Rocks Primary School is on the Bushfire Zone Register (BZR). This treatment plan has been prepared to assist Department of Education (DoE) and the school with managing bushfire risk. Site visit was attended by School Principal, school gardener and Department of Fire and Emergency Services (DFES) Bushfire Risk Management Liaison Officer. Generally, the school grounds are well maintained. DFES advised that there must be at least 1 metre clearance from the buildings for any future planting within the 20m asset protection zone Once treatment plan is implemented, School is responsible to maintain the Asset Protection Zone (APZ) in perpetuity as depicted in Map 3.1. <u>Before the commencement of any treatments stated in this report, contractors are to consult with the Principal and School administration are to be notified.</u> 			

1 Environmental Sensitivities and Considerations

ENVIRONMENTAL SENSITIVITIES CHECK

Sensitivities identified: YES ☒ NO ☐

This treatment plan includes vegetation modification and as such Department of Fire and Emergency Services (DFES) has undertaken a preliminary check for environmental sensitivities. The following environmental sensitivity has been identified and will require further consideration by Department of Education Environmental services (DoE);

- Species of National Environmental Significance – EBPC Threatened Flora.
- Species of National Environmental Significance – EBPC Threatened Fauna.
- Ecological Communities of National Significance Environmental.

Notes for Contractor:

For any environmental concerns or queries, please contact DoE Environmental Services before any works on the school site are initiated or undertaken. Contact DoE Environmental Services via email:

EnvironmentalServices.SAP.CO@education.wa.edu.au.

Department of Education Environmental Services confirm that the treatment plan has adequately considered environmental and amenity factors.

Phil Brewer DoE Environmental Services Representative	Endorsed / Not Endorsed Date:23/11/20
Comments-	

2 Compliance

2.1 Responsibilities

The following table identifies the parties responsible for the implementation and compliance of the treatment strategies.

Table 1 Implementation and Compliance Responsibilities

Treatment Strategy	Responsibility	Implementation and Compliance
Asset Protection Zone	School Department of Education	To maintain a low fuel state in the Asset Protection Zone in perpetuity as depicted by Map 3.1. To maintain information on the Ikon web page for Bushfire Preparedness.
Prescribed Burning	Local Government Department of Fire and Emergency Services Department of Education School Principal	To conduct the burn when the lead agency. To conduct the burn when the lead agency. To maintain information on the Ikon web page for Bushfire Preparedness. To confirm when the Prescribed Burning is completed.
Vehicular Access	Local Government	To provide Vehicular Access in Accordance with State Planning Policy 3.7.
Mechanical Works	School Department of Education	To provide sign off when treatments contained in Bushfire Risk Assessment and Treatment Plan (BFRATP) are completed. To maintain the database for treatments and information on the Ikon web page for Bushfire Preparedness.
Building Construction to AS3959	Department of Education	When applicable, comply with State Planning Policy 3.7, Local Government Firebreak Regulations or AS3959 when building or constructing in Bushfire Prone Areas.
Stand-alone Bushfire Plan	School Principal Department of Education	To prepare, review and submit a Standalone Bushfire Plan annually via SharePoint system. To monitor school compliance in relation to their annual Standalone Plan Bushfire requirements prior to the next Bushfire Season.

3 Maps and Geospatial Information

3.1 Asset Protection Zone and Hazard Separation Zone Map

The following map identifies the 20m asset protection zone (APZ) and 80m hazard separation zone (HSZ) areas surrounding the school. The school is responsible for maintaining the area within the asset protection zone as per the 'Principal's Guide to Bushfire'.

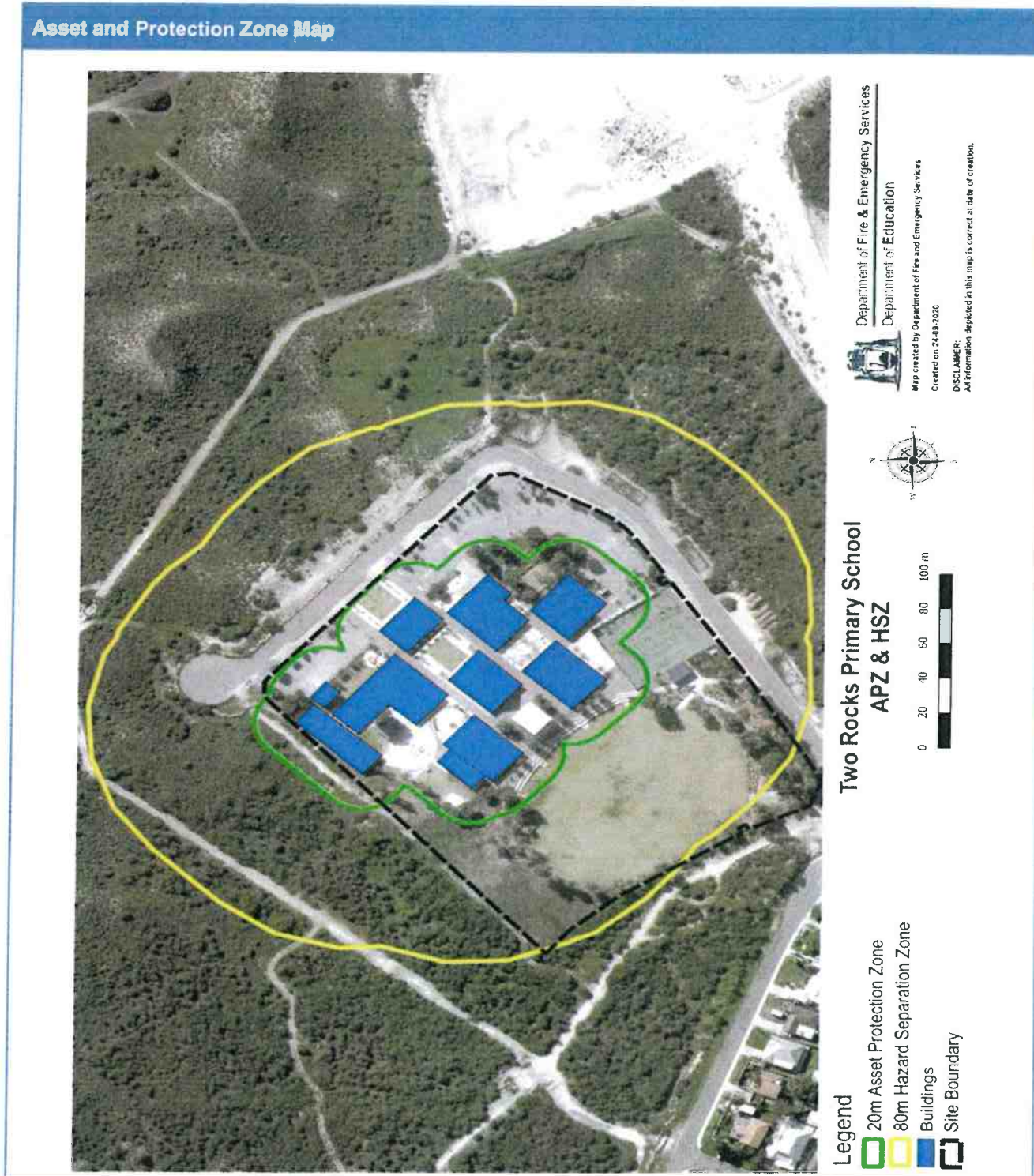


Figure 1 Map of School Site with APZ/HSZ.

3.2 Fuel Management Items Map

The following map identifies the areas where physical bushfire management works for Fuel Management Items are proposed to be undertaken. Each Item is identified by a number and the corresponding Fuel Management Items for Contractors and Schools are detailed in Section 4.

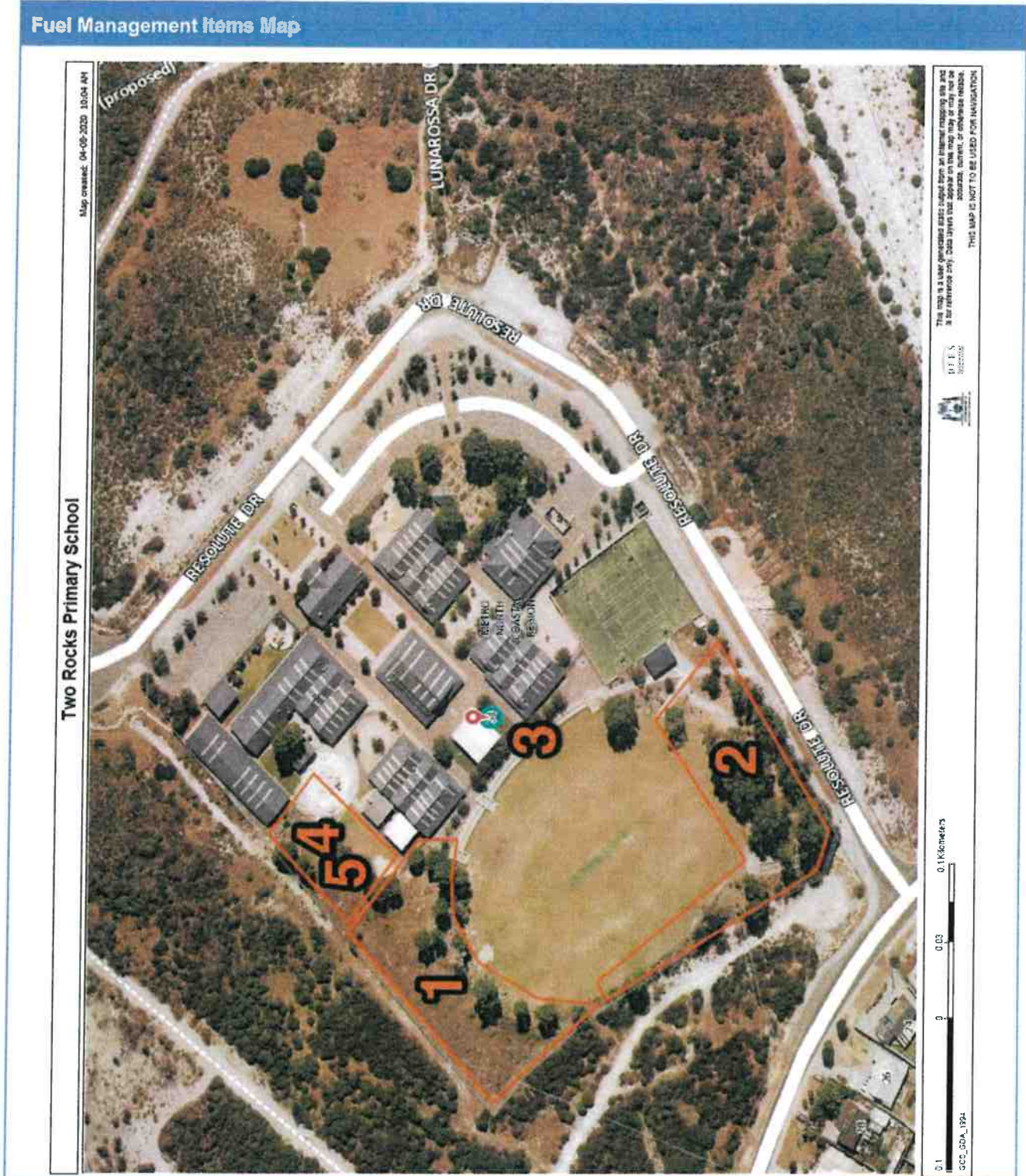


Figure 2 School site and location of Contractor and School Fuel Management Items.

4 Contractor and School Managed Treatment Items


4.1 Fuel Management Items - Contractor

The following Treatment Items are to be implemented by the responsible representatives. Please refer to the preceding **3.2 Fuel Management Items Map** for Fuel Management Item locations.

- Trimming and pruning of tree branches should be such that a 3m gap is created between the branches and the building where possible.
- All works to be completed to Australian Standard 4373-2007 Pruning of Amenity Trees. All green waste is to be removed from site, unless a written statement confirming otherwise is provided.
- Where the treatment plan includes tree removal, this item shall also include stump removal / grinding.

Where AS 4373-2007 cannot be met, please contact **DoE Environmental Services** for further advice-
Phone: 9264 0111 Email: EnvironmentalServices.SAP.CO@education.wa.edu.au.

Table 3 List of Contractor Fuel Management Treatment Items

Map Item ref	Treatment Strategy	Treatment works required	Date completed	Signature
1	Asset Protection Zone/Hazard Separation Zone	Remove dead vegetation and saplings above 0.5metres and less than 2metres in height. Spray weeds and maintain grasses to below 0.1metres.	24 th Nov 2020	
2	Hazard Separation Zone	Remove dead vegetation, weeds and nonnatives, Acacia shrubs and saplings, Pepper trees and all vegetation overhanging fence-line. Under prune trees up to 2metres and establish a 1metre clearance around the base of trees Cut grasses to below 0.1metres.		
3	Asset Protection Zone	Prune branches within 1metre of roof.		
4	Asset Protection Zone	Remove all shrubs (<i>circled in images</i>)		

4.1.1 Fuel Management Items – Contractor

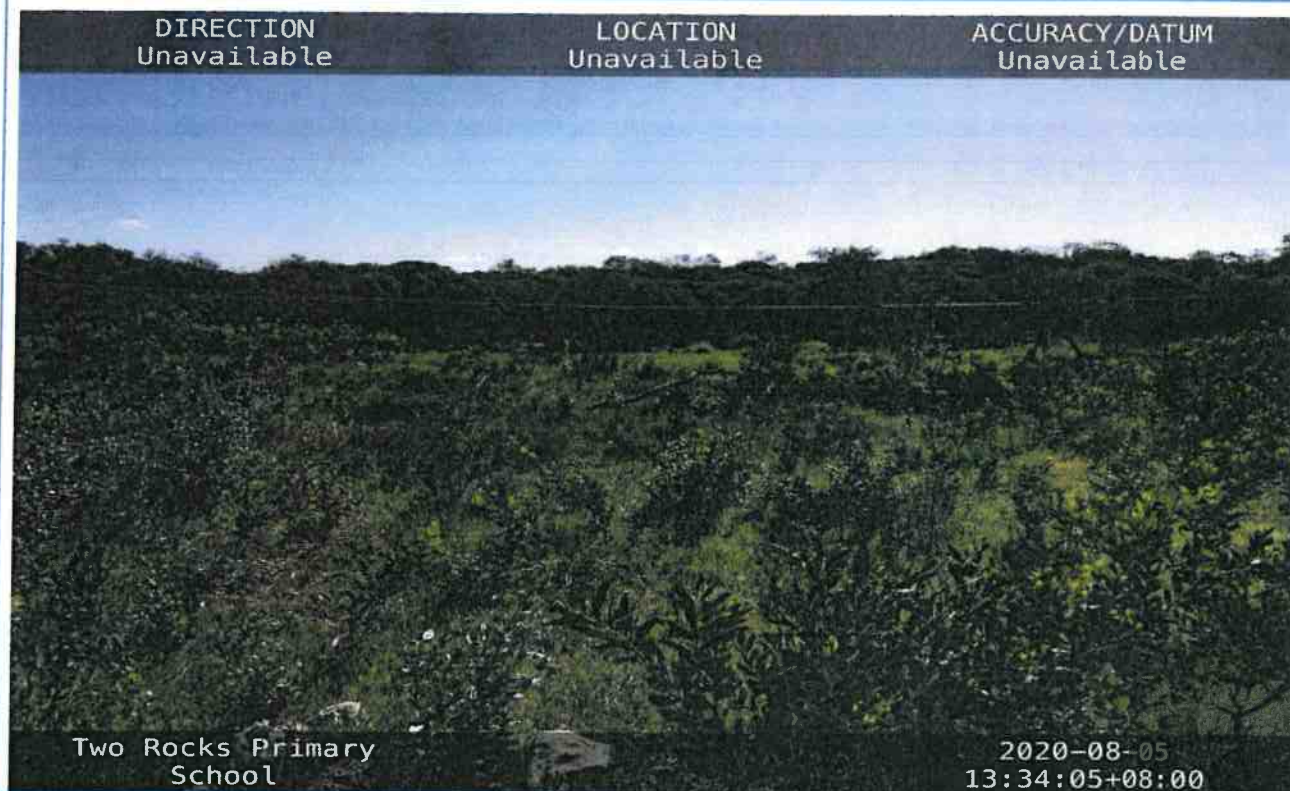
Item 1



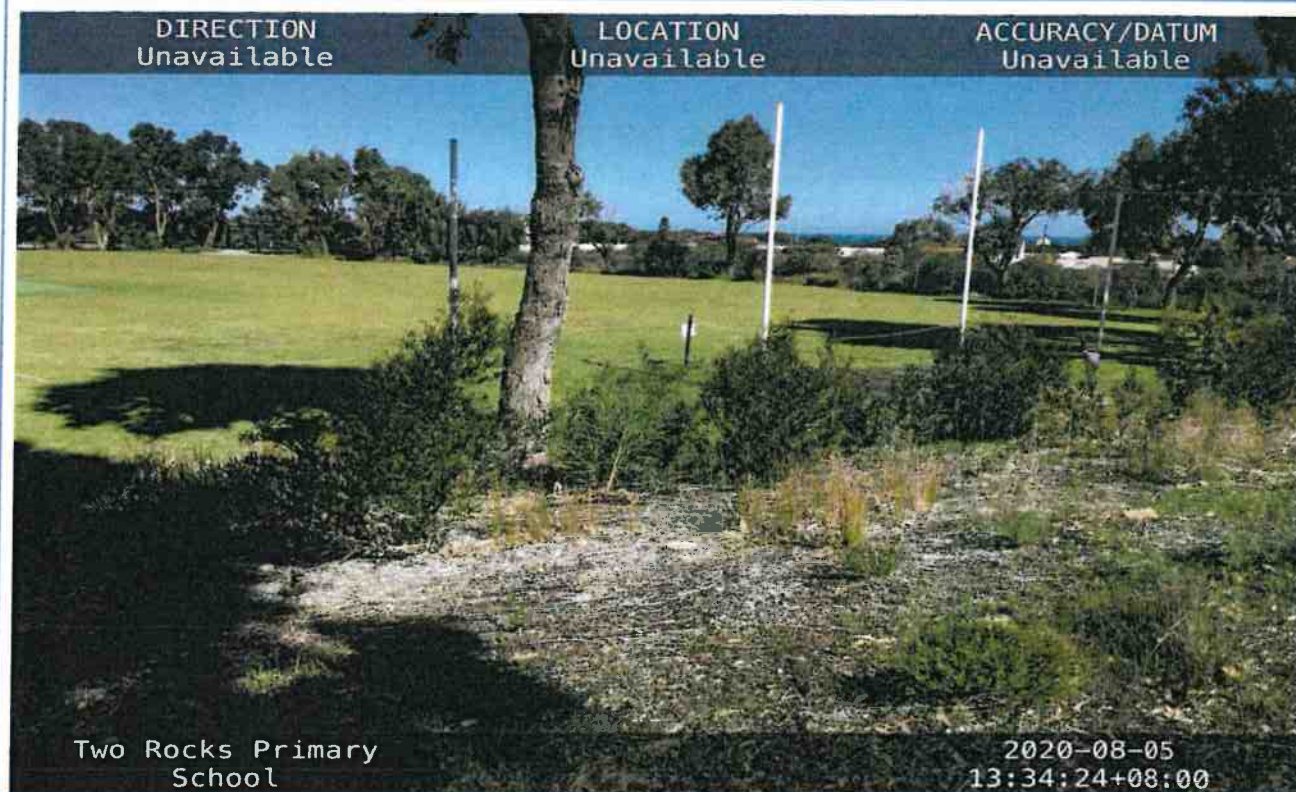
Item 1a



Item 1b



Item 1c



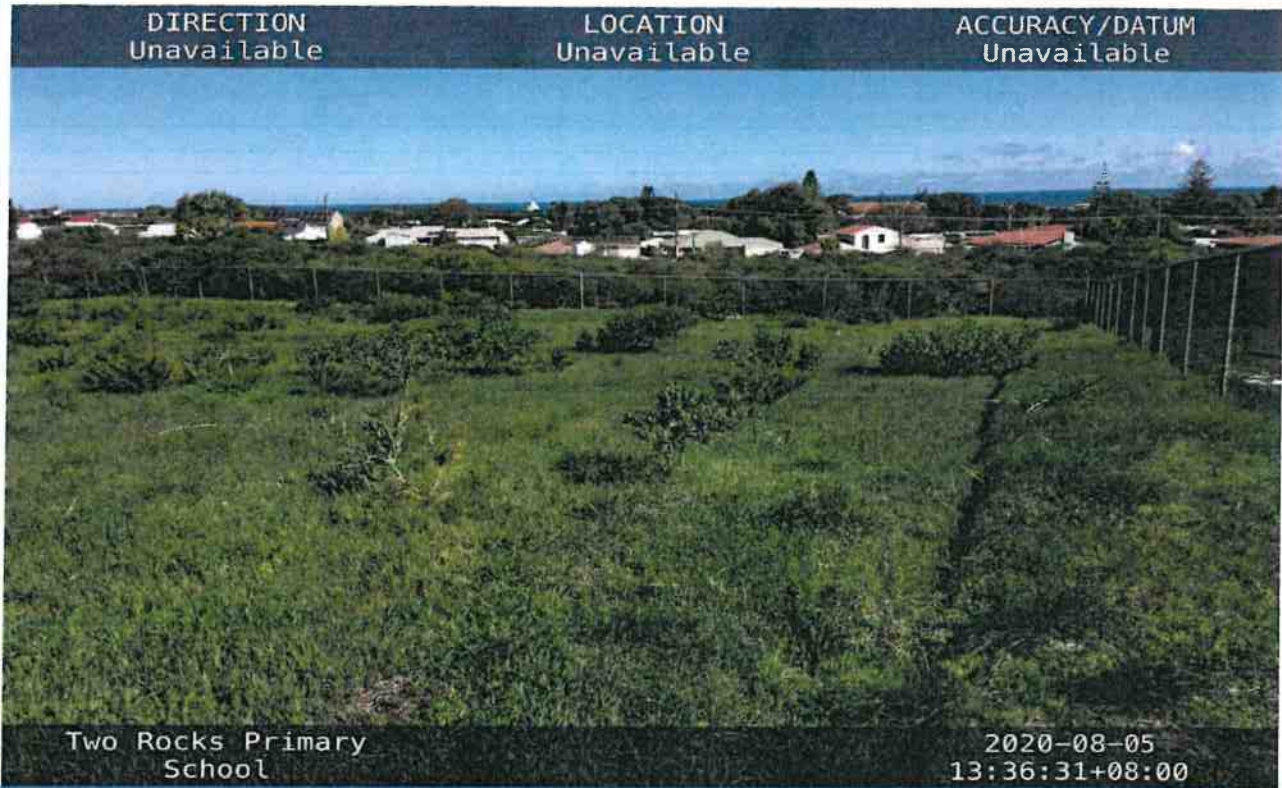
Item 1d



Item 1e



Item 1f



Item 1g



Item 2



Item 2a



Item 2b



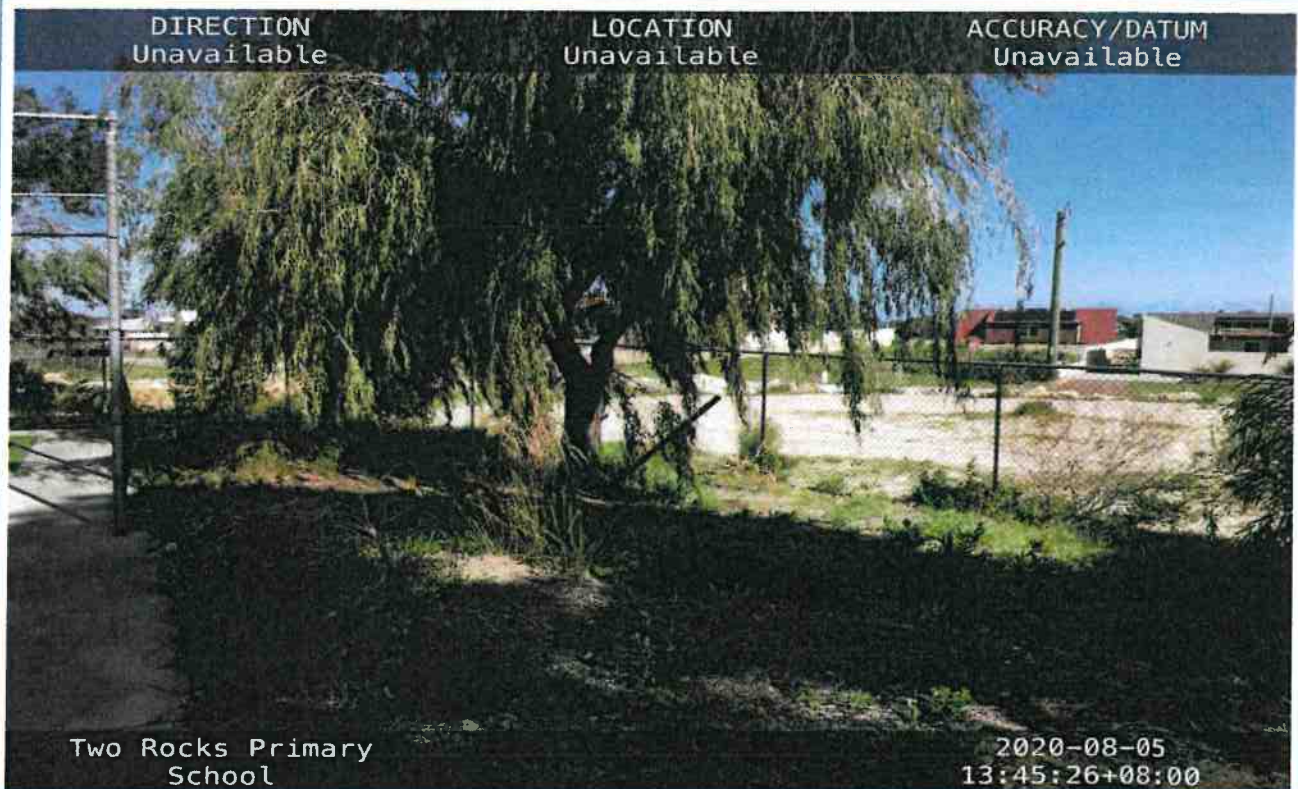
Item 2c



Item 2d



Item 2e



Item 2f



Item 2g



Item 2h



Item 2i



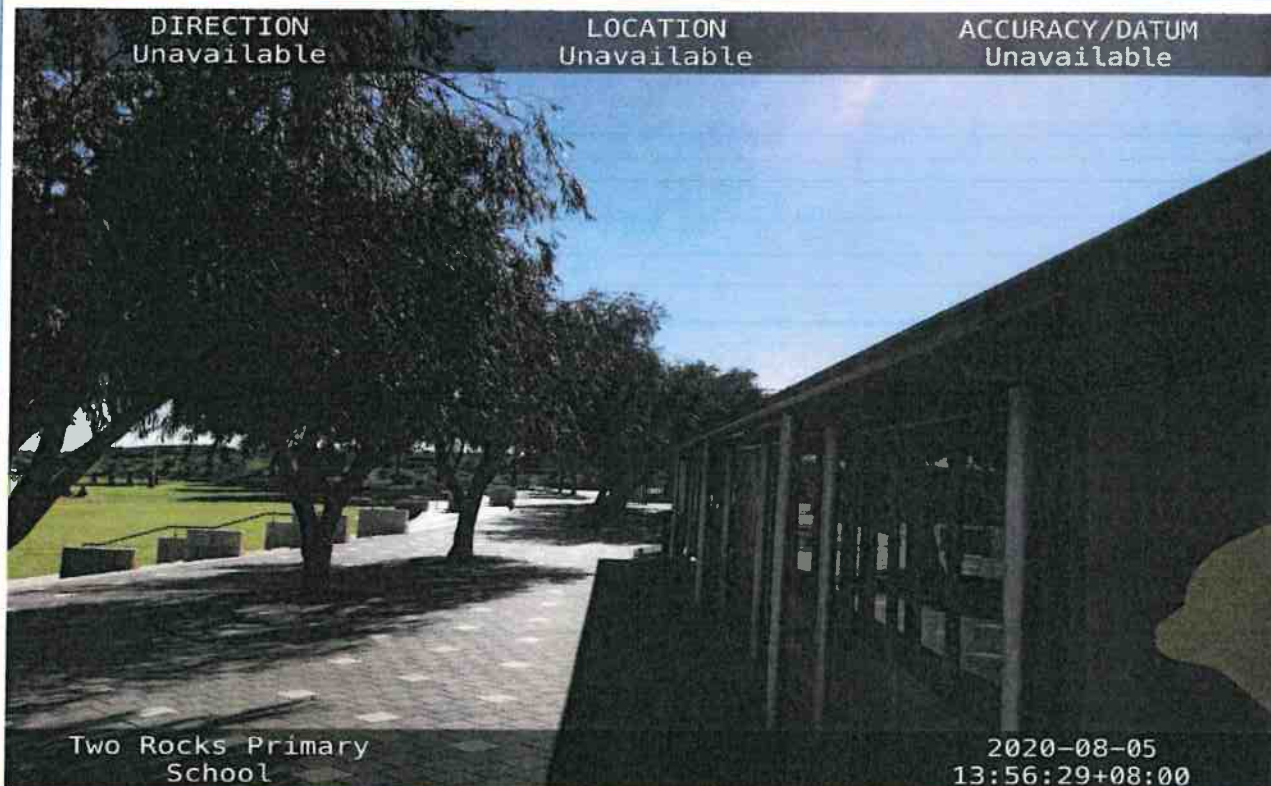
Item 2j



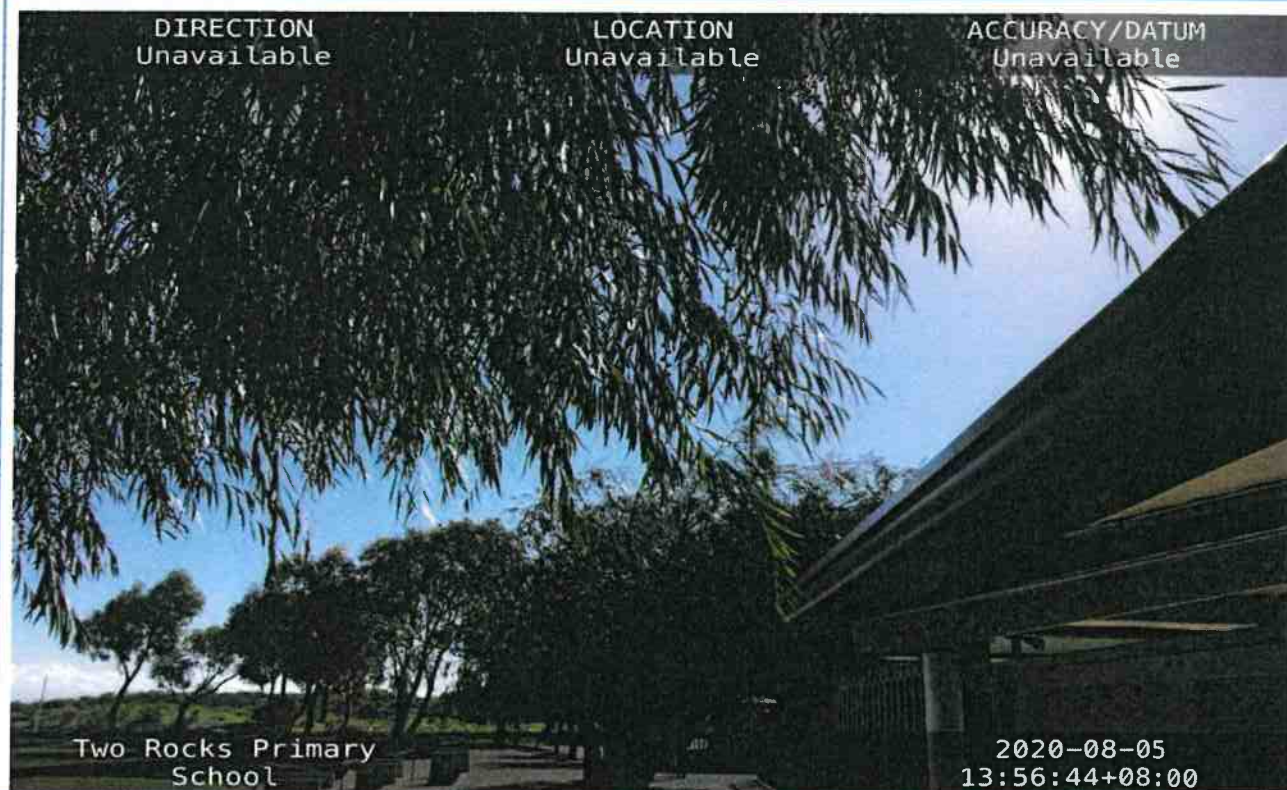
Item 2k



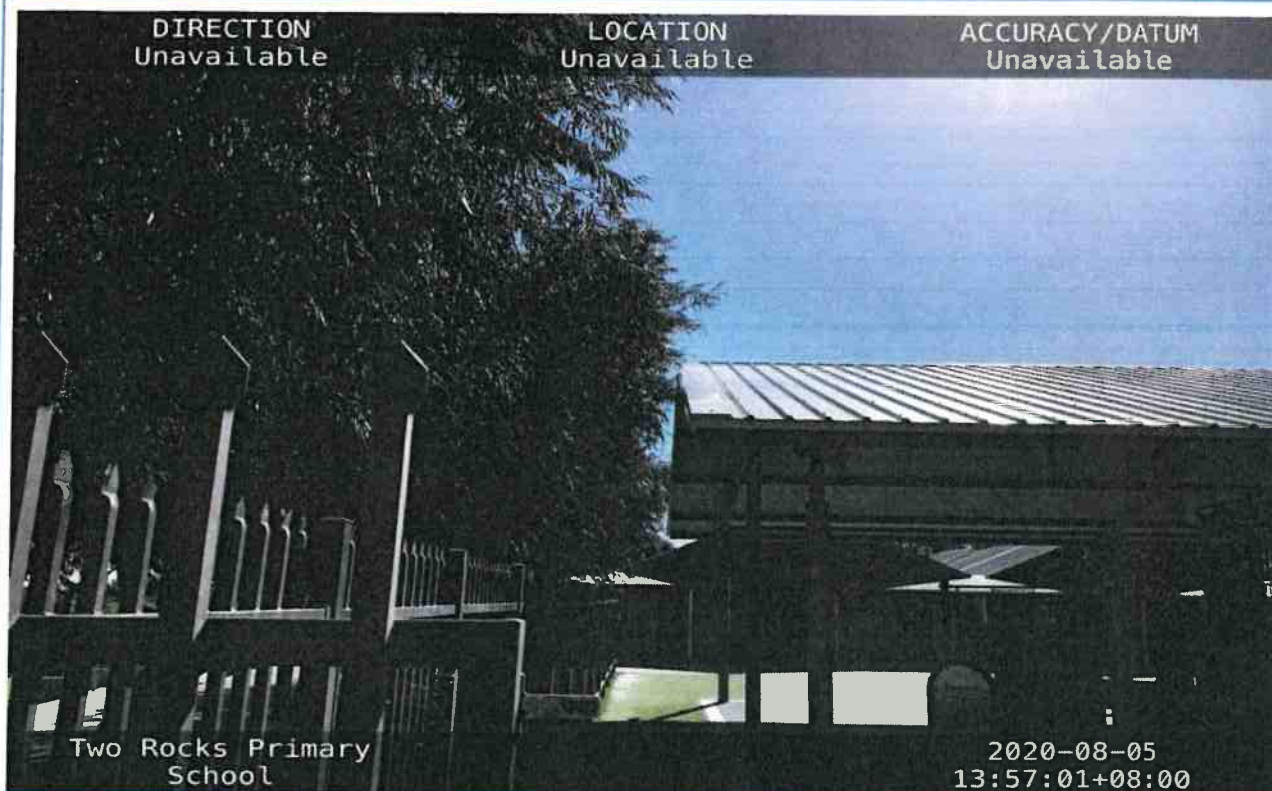
Item 3



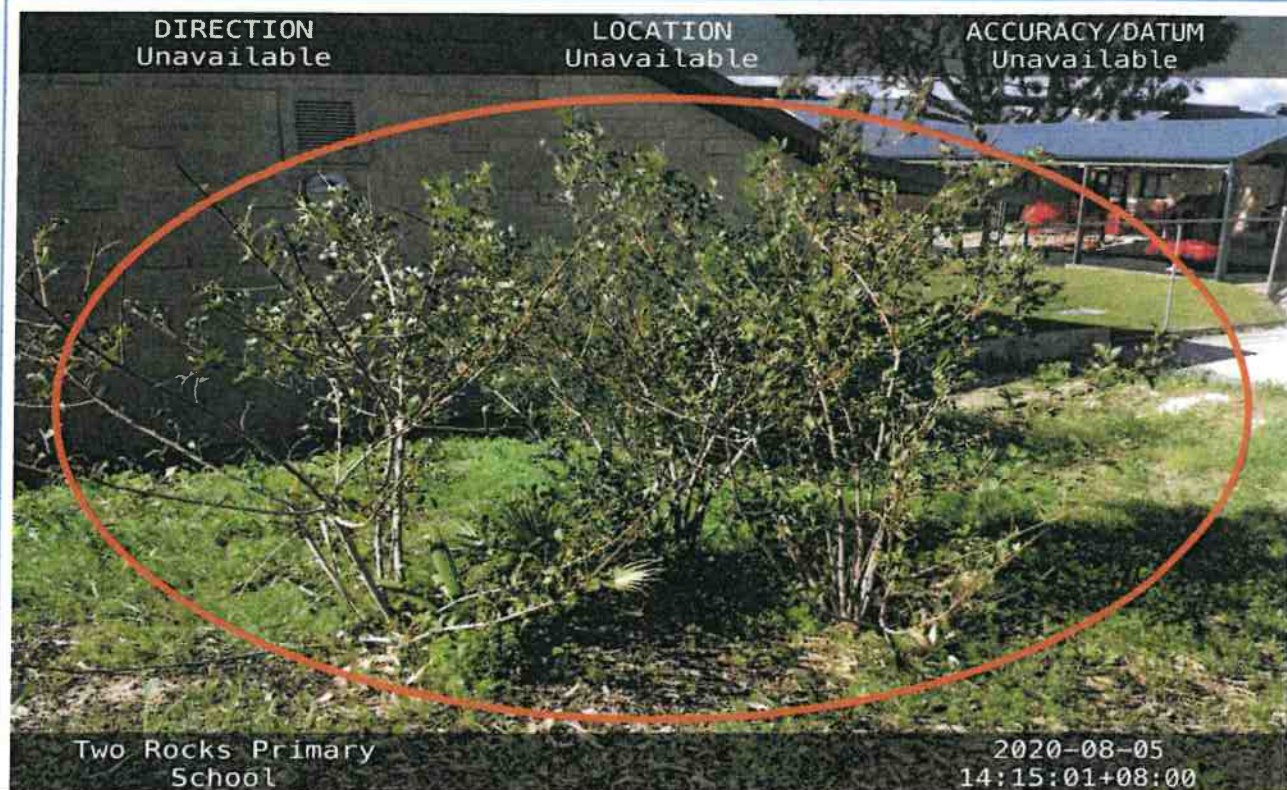
Item 3a



Item 3b



Item 4



Item 4a



Item 4b



4.2 School Managed Treatment Items

Please refer to the preceding 3.2 Fuel Management Items Map for Fuel Management Item locations.

Table 4 List of School Fuel Management Treatment Items

Map Item ref	Treatment Strategy	Treatment works required	Date Completed	Principal Signature
5	Asset Protection Zone	Remove weeds and maintain grasses to below 0.1metres	27/11/2020	<i>[Signature]</i>

Fuel Management Items – School

Item 5




Item 5a



5 School Principal Approval

This section is to be signed by the school principal and returned to the Department of Fire and Emergency Services schools.busfire@dfes.wa.gov.au before any work commences.

 Elizabeth Wildish Principal Two Rocks Primary School	<input checked="" type="checkbox"/> Approved / Not Approved Date: 30/11/2020
Comments: Due to bush fire season commencing tomorrow. Please expedite the proposed clearance.	

DISCLAIMER

This report (Report) has been produced independently by the Department of Fire and Emergency Services (DFES) on the request of the Department of Education (DoE). Neither DFES, nor any of their employees, makes any warranty, express or implied, or assumes any legal liability or responsibility for the accuracy, completeness, or any third party's use or the results of such use of any information contained in the Report.

The Report has been prepared solely for Forrestdale Primary School and use by DoE in management of potential bushfire risk impacting the existing site. The recommendations contained in the report do not guarantee freedom from damage in the event of a bushfire. All recommendations are made on the basis of information available at the time of the preparation. DFES shall not be liable for any loss or damage.

This Report is valid for a period of 12 months from the date of issue. After this time the effectiveness of the bushfire risk management strategies detailed in this report should be revised and a new treatment plan prepared accordingly.






30 November 2020


As per Bushfire Risk Assessment and Treatment Plan—Fuel Management Items School
- Area has been cleared and weeds and grassed maintained below 0.1m

Appendix A – Bushfire warnings stages

Issued by the Department of Fire and Emergency Services and Department of Biodiversity, Conservation and Attractions – Parks and Wildlife Service.

Emergency services communicate information in a number ways during a bushfire event. Use these warnings to understand when your need to activate your bushfire procedures (refer to Appendix B).

Bushfire warning stages		
1	 ADVICE	<p>A fire has started but there is no known danger.</p> <p>This is general information to keep principals informed and up to date with developments.</p> <p>Principals must:</p> <ul style="list-style-type: none"> • turn off evaporative air conditioners and ensure roof vents are closed. • check and patrol school regularly for bushfire activity, paying special attention to the evaporative air conditioners.
2	 WATCH AND ACT	<p>There is a possible threat to lives and property. Conditions are changing.</p> <p>Principals must prepare to:</p> <ul style="list-style-type: none"> • evacuate • or • move students, staff and visitors to their pre-determined onsite 'safer building location'. They must not be moved to an open area. <p>Evacuation orders are:</p> <ul style="list-style-type: none"> • issued by the incident controller or emergency services if required. • relayed via a variety of official sources such as the DFES website and Emergency WA website. <p>It is vital that the principal:</p> <ul style="list-style-type: none"> • accesses bushfire information from official sources. • makes an informed decision to stay on-site or evacuate offsite based on advice from the incident controller or emergency services.
3	 EMERGENCY WARNING	<p>A school is in danger as its area will be impacted by fire. Take immediate action to survive.</p> <p>Principal will be advised whether staff, students and visitors can leave the area or if they must shelter where they are as the fire burns through the area.</p> <p>An emergency warning may be accompanied by a siren sound called the Standard Emergency Warning Signal (SEWS).</p> <p>Cont...</p>

		<p>Evacuation orders are:</p> <ul style="list-style-type: none"> • directed by the incident controller or emergency services • relayed via a variety of official sources, such as the Bushfire warning system, DFES website and Emergency WA website. <p>It is vital that the principal:</p> <ul style="list-style-type: none"> • accesses bushfire information from official sources • makes an informed decision to stay onsite or evacuate offsite based on the advice .
4		<p>The danger has passed and the fire is under control, but stay alert in case the situation changes.</p> <p>It may not be safe to return to school yet.</p>

Appendix B – Procedures in event of a sudden bushfire

Relocate to onsite 'safer building location(s)'

You may be instructed to relocate to your onsite 'safer building location(s)'. Do not use an open area such as a school oval or non-enclosed building

Initiate the below procedure if the following occurs:

- a 'Watch and Act' or 'Emergency Warning' alert is issued on the [Emergency WA](#) website or the [Department of Fire and Emergency Services Bushfire Warnings page of the Department of Fire and Emergency Services website](#) (refer to Appendix A for details about the alerts); and
- instruction from the Department of Fire and Emergency Services, Emergency Services or your Director of Education.

Follow these procedures to relocate to the onsite safer building location(s).

Action	Notes (if required)
Dial 000 for emergency services and follow advice. Remain in contact with the Department of Fire and Emergency Services and monitor official bushfire information sources shown in section 2.1.	
Activate your incident management team to carry out their responsibilities (refer to section 3).	
Use your emergency response contact list to contact stakeholders (refer to section 2).	
Follow your bushfire response telephone call tree to communicate with the school community. Ensure parents receive emergency text message alerts to: <ul style="list-style-type: none"> • inform them of relocation • keep them updated (use the emergency text message alert templates). Note: Parents must not collect students until instructed.	
Confirm: <ul style="list-style-type: none"> • evaporative air conditioners are turned off • all building roof vents, windows and doors are closed before anyone enters the onsite safer building location(s). 	
Take emergency equipment (refer to section 5): <ul style="list-style-type: none"> • registers for students, staff and visitors • evacuation kit • mobile phones (charged). Sound school emergency warning or alert system.	

<p>Follow advice from the incident controller or emergency services, the Manager, Security and Emergency Management or the Director of Education to move to the onsite safer building location(s) (refer to section 7.1 for map)</p> <p>Note: Students and staff must remain in classrooms unless they are directed to move to an onsite safer building location.</p>	
<p>Check student, staff and visitor registers after moving to an onsite safer building location (roll call). Advise the police if anyone is missing.</p> <p>Note: You must give special consideration to students with known respiratory conditions.</p>	
<p>Update the emergency services on the location of students, staff and visitors.</p>	
<p>Wait for the emergency services to arrive or the incident controller to provide you with further information.</p> <p>Ongoing advice will also be provided by the Manager, Security and Emergency Management or the Director of Education.</p> <p>Continue to monitor official bushfire information sources shown in section 2.1.</p>	
<p>The Department will consult the incident controller or emergency services and notify you when it is safe to return to classrooms or for students to be collected by parents. You will receive advice from the Director of Education.</p>	

Offsite evacuation procedures

You may be instructed to relocate to your offsite evacuation.

Initiate the below procedure if the following occurs:

- 'Watch and act' or 'emergency warning' bushfire warning alert on the [Emergency WA](#) website or the [Department of Fire and Emergency Services Bushfire Warning system](#) is invoked (refer to the bushfire warnings listed in Appendix A); and
- Direction from Department of Fire and Emergency Services, incident controller or Emergency services to evacuate offsite; or
- Direction from the Deputy Director General Schools or the Manager, Security and Emergency Management. The Director of Education will relay the decision to you to evacuate offsite.

Follow these procedures if you need to evacuate to an offsite evacuation location during a bushfire event.

Action	Notes (if required)
Dial 000 for emergency services and follow advice. Remain in contact with Department of Fire and Emergency Services and your Director of Education. Monitor official bushfire information sources shown in section 2.1.	
Activate your incident management team to carry out their responsibilities (refer to section 3).	
Refer to the 'emergency response contact list' to contact stakeholders (refer to section 2).	
Follow advice from the emergency services or the Manager, Security and Emergency Management or the Director of Education to decide which of the school's offsite evacuation location(s) is the safest to use (refer to section 7.2).	
Identify an assembly area where staff, students and visitors can gather to prepare for offsite evacuation. Note: Students and staff must remain in classrooms unless they are directed to move to an onsite safer building location and/or onsite assembly area.	
Follow the 'bushfire response telephone call tree' to communicate with the school community. Ensure parents receive emergency SMS alerts to: <ul style="list-style-type: none"> • inform them of relocation • keep them updated (refer to emergency text message alert templates in Appendix C). Note: parents must not collect students until instructed.	

<p>Confirm:</p> <ul style="list-style-type: none"> • evaporative air conditioners are turned off • building roof vents and doors are closed. 	
<p>Take emergency equipment (refer to section 5):</p> <ul style="list-style-type: none"> • registers for students, staff and visitors • evacuation kit • mobile phones (charged). <p>Sound school emergency warning or alert system.</p>	
<p>Move all students, staff and visitors from the assembly area to evacuate offsite.</p>	
<p>Check registers after evacuating staff, students and visitors (roll call). Advise the police if anyone is missing.</p>	
<p>Update the emergency services incident controller on location of students, staff and visitors.</p>	
<p>Wait for emergency services to arrive or the incident controller to provide further information. The Manager, Security and Emergency Management or the Director of Education will provide ongoing advice. Continue to monitor official bushfire information sources shown in section 2.1.</p>	
<p>The Department will consult the incident controller or emergency services and notify you when it is safe to return to classrooms or for students to be collected by parents. You will receive advice from the Director of Education.</p>	

Appendix C - Pre-emptive (planned) closure procedures

You **MAY** be instructed to pre-emptively close your school due to a predicted catastrophic fire danger rating.

Initiate the below procedure if the following occurs:

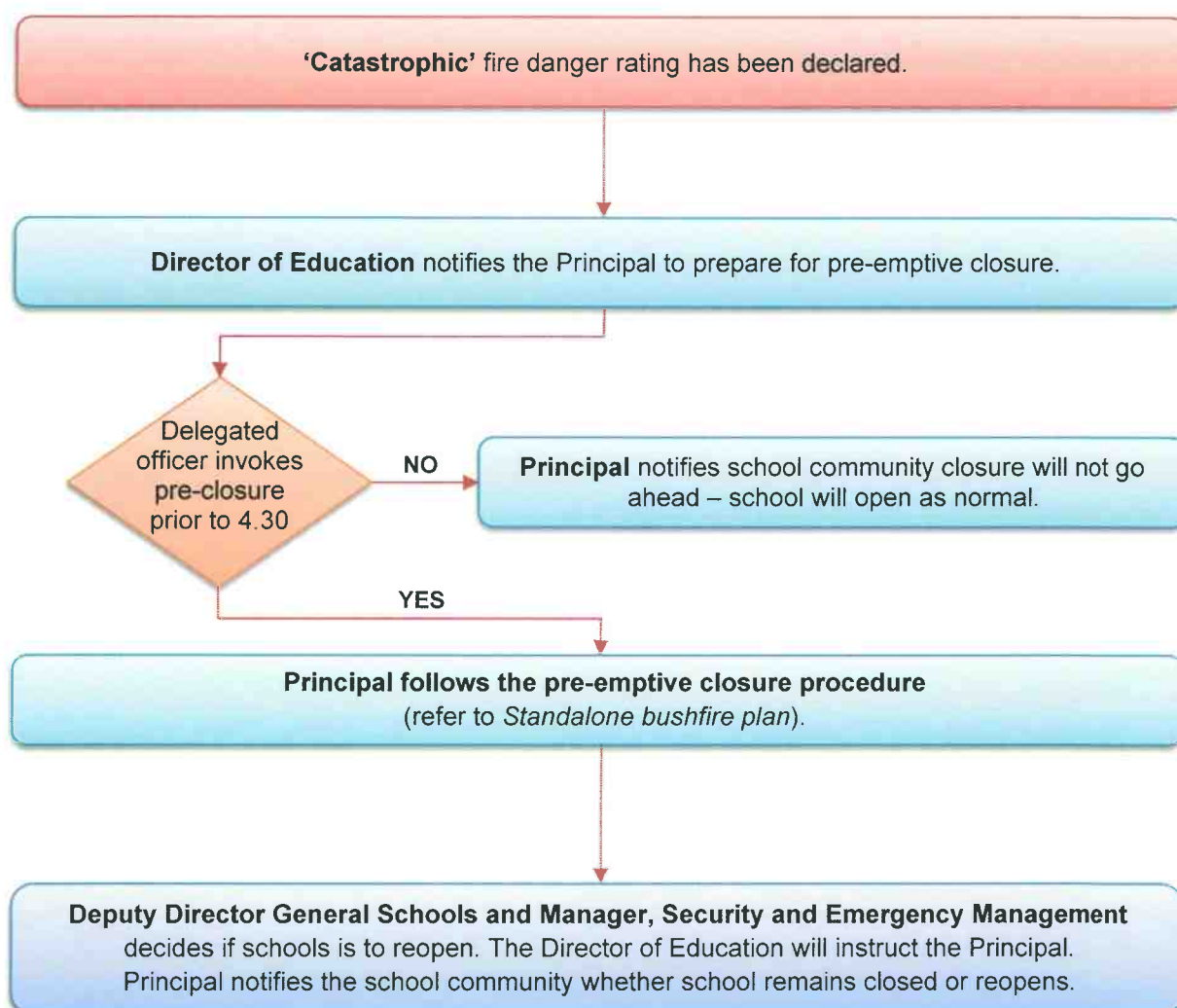
- Alert received from the Department of Fire and Emergency Services; or
- Direction from the Deputy Director General, Schools or the Manager, Security and Emergency Management. The Director of Education will relay the decision to you.

Follow these procedures for a planned school closure in response to predicted catastrophic fire conditions. Also refer to the Flow chart – Principal's response to catastrophic fire danger rating below.

Action	Notes (if required)
Monitor official bushfire information sources shown in section 2.1.	
Activate your incident management team to carry out their responsibilities (refer to section 3).	
Confirm: <ul style="list-style-type: none"> • windows and doors are closed • evaporative air conditioners are turned off • roof vents closed • money is removed from the school premises • expensive items of equipment secured. 	
Use your emergency response contact list to contact stakeholders (refer to section 2).	
If it is safe and there is no active fire in the region, two nominated staff members (usually the Principal and one other staff member) attend school from 8.00am to 9.00am on the day of pre-emptive closure. They: <ul style="list-style-type: none"> • inform community members of the school closure • secure the facility and activate the electronic security system when leaving (only if it is safe to do so) the site at 9.00am. 	
Communicate the pre-emptive closure, continued closure or school reopening: <ul style="list-style-type: none"> • follow the bushfire response telephone tree (refer to communication templates in Appendix C) • place the notice of temporary closure on external school access points and on the school website • use social media channels to keep the school community updated. <p>Note: Contact lists for staff and parents must be current.</p>	

Secure school premises and activate security system. Before departing, email AssetPlanningServices.SecurityEM@education.wa.edu.au or call 9264 4632 to confirm: <ul style="list-style-type: none"> all security systems armed site is secure. 	
Remove the notice of temporary closure from external school access points if pre-emptive closure is reversed.	

Flow chart – Principal's response to 'catastrophic' fire danger rating



Appendix D – After hours or school holiday procedures

You may be instructed to keep your school closed during the school holidays or after hours during a bushfire event.

Initiate the below procedure if the following occurs:

- 'Watch and act' or 'emergency warning' bushfire warning alert on the [Emergency WA](#) website or the [Department of Fire and Emergency Services Bushfire Warning system](#) is invoked (refer to the bushfire warnings listed in Appendix A); and
- Direction from the Deputy Director General, Schools or the Manager, Security and Emergency Management. The Director of Education will relay the decision to you.

Follow these procedures if a bushfire starts during the school holidays or after hours.

Action	Notes (if required)
Remain in contact with your Director of Education and monitor official bushfire information sources shown in section 2.1.	
Use your emergency response contact list to contact stakeholders (refer to section 2).	
Follow the bushfire response telephone call tree to communicate with the school community. Send parents and staff emergency text message alerts to inform them of the school closure (refer to emergency text message alert templates in Appendix E).	
Work with the Director of Education to seek alternative school and transport arrangements (if required).	
Department Media Unit uses media outlets to make public announcements of: <ul style="list-style-type: none"> • the school closure • temporary alternative accommodation. 	
The Department will consult the incident controller or emergency services and notify you when it is safe for the school to reopen. You will receive advice from the Director of Education or the Manager, Security and Emergency Management.	
Send parents and staff emergency text message alerts to inform them when school can reopen (refer to emergency text message alert templates in Appendix C).	

Appendix E – Communication templates

Emergency text message alert templates

You can use these sample text templates update parents, carers and staff about a response to a bushfire. These texts are also located on Ikon – refer to [Manage bushfire and emergency incident communications](#).

Public schools to close tomorrow due to catastrophic fire danger rating

[School name / all public schools in region/area] will be closed tomorrow [date] due to a catastrophic fire danger rating for the area. See [emergency.wa.gov.au/#firedangerratings](https://www.emergency.wa.gov.au/#firedangerratings) for more information. There will be no staff on site. Please ensure that you make arrangements for your child.

Students are safe and still on school site

Students from [school name] are safe and being supervised at school. We will follow the instructions of emergency services and update you if the situation changes. Monitor [emergency.wa.gov.au](https://www.emergency.wa.gov.au) or call your education regional office on [telephone number] for more information.

Students have been relocated

Students from [school name] have been relocated for their safety. Please collect your children from the relocation centre at [exact location]. Follow the instructions of emergency personnel and monitor [emergency.wa.gov.au](https://www.emergency.wa.gov.au) or call your education regional office on [telephone number] for more information.

Not safe to pick up children

Students from [school name] are safe and [are still on school site / have been relocated for their safety]. Please wait for further instructions before attempting to collect your child. We are working with emergency services and will advise when it is safe to do so. Monitor [emergency.wa.gov.au](https://www.emergency.wa.gov.au) or call your education regional office on [telephone number] for more information.

School to reopen on [day]

[School name] will reopen tomorrow/day [date].

School newsletter sample text

You can use this sample text below can be used to provide the school community with information about a pre-emptive closure.

Pre-emptive (planned) school closure during the bushfire season

[School name] has been place on the Department of Education bushfire zone register as it is located in a designated bushfire risk area.

If a 'Catastrophic' fire danger rating has been declared for the [City/Town/Shire] of [name of your school's local government area], a school **MAY** be required to invoke a pre-emptive (planned) closure. A 'Catastrophic' fire danger rating poses a significant threat to the school if a fire starts, it is likely to be uncontrollable, unpredictable and fast moving.

Parents will receive a text message to inform them of a possible Pre-emptive closure of the school.

The final decision to pre-emptively close the school will be confirmed with the principal no later than 4.30pm on the day before the pre-emptive closure. If the forecast changes after the 4.30pm deadline, the school remains closed to limit confusion within the school community. Parents will receive a text message to either confirm or reverse a Pre-emptive closure of the school.

Typically, schools will only be required to close for a day at a time. However, this will depend on changing weather conditions. Parents will receive a text message to advise if the school will reopen the day after the pre-emptive closure, or whether it will remain closed.

Parents are encouraged to monitor official bushfire information sources for current information about fire danger ratings:

- 1) [Emergency WA website](https://www.emergency.wa.gov.au/) - <https://www.emergency.wa.gov.au/>
- 2) **Department of Fire and Emergency Services**
Information line – 13 33 37
Twitter - https://twitter.com/dfes_wa
- 3) **Local radio**
 - [ABC Emergency WA](#)
 - ABC local radio
 - 6PR

Please contact the school on <school phone number> with any concerns relating to Pre-emptive closures during the bushfire season.

[Name]
Principal

Sample text for a notice of temporary school closure

The sample text below can be used in a notice to be placed on:

- the school main notice board at front of the school
- main administration entrance doors
- other entry/exit doors throughout the buildings
- kindergarten and pre-primary, where relevant.

BUSHFIRE ALERT

NOTICE OF TEMPORARY SCHOOL CLOSURE

As the result of a 'Catastrophic' fire danger rating, this school is temporarily closed.

The school will re-open on advice from the Department of Fire and Emergency Services (DFES).

For more information about the bushfire threat:

- call 13 DFES (13 33 37)
- visit www.dfes.wa.gov.au and [Emergency WA](#)
- stay tuned to ABC local radio.

For more information about the school, contact the principal on [insert contact details] or the [insert region] regional education office on [insert contact number].

Thank you.

[Name]
Principal